

HERALD OF PEACE

Vol. 15 No. 4

April 2017

5590 Kings Highway, King George, VA 22485

540-775-9131

PLC@PeaceLutheranKGVVA.org

PeaceLutheranKGVVA.org

The mission of Peace Lutheran Church is to serve God by sharing Christ's love in order to make a difference in people's lives.



FROM THE PASTOR ...

APRIL 2017

I heard some of the young people discussing giving up sweets for Lent. It got me thinking about this whole idea of giving up something during the season prior to Easter. A couple of years ago I gave up potato chips. It wasn't long before I fell off the wagon, I had a bag of Fritos with my sandwich coming back from a Youth Ski Retreat. Someone said, "That's OK, Pastor! It's Sunday and Sundays don't count as the forty days of Lent" (From Ash Wednesday through Maundy Thursday is forty-six days). I believe that this is called the **"Lutheran Lenten Loophole."**

What and how we give up something we enjoy during this penitential season is only beneficial if it helps us realize just what God has given up for us! In Romans, Paul states that God "gave Himself up for us all!" On Good Friday when we will again watch Jesus go to the Cross and GIVE Himself UP for us, and all people, the meager effort we make at sacrifice is less than insignificant! In fact I would say that if we "feel good" about what we give up for Lent, we've missed that whole point of our faith!

If we can somehow grasp just what Jesus did for us, then we at first "feel bad"! Our Lord and King and Almighty God did not have to humble Himself and become obedient unto death on a Cross because of our sins! He gave it all up, even a relationship with the Father, because of His great love for us. This is what we are commemorating during Lent and celebrating on Good Friday and Easter. It is because of what He gave up, that we can now joyfully want to give up everything in service to God.

I can't say it any better than the Apostle Paul in 2 Corinthians 5:14-15:

"For the love of Christ controls us, because we have concluded this: that One has died for all, therefore all have died; and He died for all, that those who live might no longer live for themselves but for Him Who for their sake died and was raised."

Christ gave up everything for us because of His love. Through faith He enables us to die to self, so that we can live for Him. His Easter Victory is ours. What we give up is nothing to what we have received: Forgiveness, salvation and a new life that lasts forever!

THE LORD IS RISEN! HALLELUJAH!

Terry Naumann

Dates and Events in APRIL

7 pm Lenten Worship: April 6 * *April 9 - Sunday of the Passion

April 13 - Maundy Thursday * *April 14 - Good Friday

April 16 - The Resurrection of Our Lord, Easter Day

April 23-29 - National Volunteer Week



HOLY WEEK SCHEDULE

April 9: Sunday of the Passion

Worship at 8:30 and 11 am. Sunday School at 9:45

April 13: Maundy Thursday Worship at 7 pm

April 14: Good Friday Worship at 7 pm

April 16: The Resurrection of Our Lord, Easter Sunday

Sunrise Worship at 6:15 am, Dahlgren Wayside Park

Easter Potluck Breakfast at the Church- 9 am

Sunday School Easter Celebration & Egg Hunt at 9:45 am

Festival Worship with Holy Communion at 11 am

Summer Sunday School

Looking ahead to summer break...and giving our dedicated weekly Sunday School teachers a well-deserved break. We are seeking **YOUR** help and caring for our children during the Sunday school hour. If all slots are not filled by the next Sunday School meeting on May 8, we will **NOT** have summer Sunday School. Information is in the Narthex on the Education Board. June 18, 25 and July 2, 9, 16, 23 Thank you in advance for your service!



VBS July 24-28 9-11:30, "Mighty Fortress"

We are looking for help for that week, organizing and decorating prior and supplies! Please MARK your calendarsthis is our LARGEST outreach from our congregation. Working together we can make this a SUCCESS!

POC: Hazel Baseler

DID YOU KNOW . . . that April showers also bring "Rainy-Day" funds?

Lutheran Church Extension Fund's (LCEF) **Family Emergency**

StewardAccount® is an easy way to set aside funds electronically for a "rainy day." Help your emergency fund grow by opening an LCEF Family

Emergency StewardAccount for as little as \$25. Sunshine can be in your future! For more information and an investment application, please see Stan Meyerhoff or visit lcef.org.

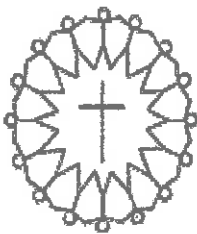


Peace Christian Preschool

April 2017

It is hard to believe that we are approaching the end of our school year. In April, we will talk about April showers, Earth Day, the changes that are happening as the weather warms, and most importantly, Easter. We will continue to prepare for our Mother's Day teas. The teas are very special events and the preschoolers work hard preparing a special celebration for their mothers.

Registration continues for next year. Please share information with friends and coworkers. We appreciate your continued prayers for this ministry of Peace. Important work is being done each day in those 3 little rooms at the end of the hall! Why don't you take a stroll down the hall and see what we have been up to?



Johnna Seale and Bethany Husson
Christine Turro and Terri Crocker
Wendy Brooks and Tina Boyd
Connie Tanner and Tracy Sullins
Staff, Peace Christian Preschool

How crucial is the Resurrection?

We cherish the birth of Jesus, His wisdom, His loving deeds, His courage in the face of a brutal death, but it is Christ's resurrection which is absolutely crucial to Christian beliefs.

In his first letter to the Corinthians, St. Paul explained that the Resurrection was the foundation of our Christian belief system. He insisted that if Christ had not been raised from the dead, then we who believe in eternal life have no hope for it at all. "If the dead are not raised, then Christ has not been raised. If Christ has not been raised, your faith is futile and you are still in your sins" (1 Corinthians 15:16-17, NRSV).

Finally, Paul expresses very clearly how critical the Resurrection is to our Christian hope. "If for this life only we have hoped in Christ, we are of all people most to be pitied".
(1 Corinthians 15:19, NRSV)



**BRISBEN
CENTER**

built by love

New Dinner Schedule for 2017

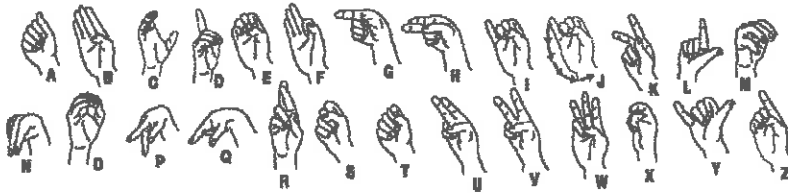
It is time to decide which month you want to help with or plan! The dates in 2017 are April 5, June 7, August 30, and October 4. Generally 5-6 people plan, shop, prepare, and serve dinner to around 80

residents, and if enough food is prepared, to some homeless. Peace has been participating for many years with this, and teens over 16 are allowed to assist in preparation, while early teens may help serve. POC is Kathy Zimmerman



"Behold my hands and my feet ..." Luke 24:39 (KJV)

Hands play an important role in the story of Jesus' death and Resurrection. Use this hand alphabet to retell the Easter story.



Jesus' _____ were _____ to the tree.



Two criminals were also crucified, one on the _____



_____ and the other on the _____ of Jesus.



Jesus cried out with a loud voice, " _____ "



into your _____, I commit my spirit."



The _____ of Jesus' friends _____



Him from the cross to the tomb.

Jesus showed _____ His _____



to prove He was Christ.

Bring your _____ together in _____



and thank God for His Son Jesus.

Make a HANDPRINT BUTTERFLY



The butterfly is a symbol of new life and of the Resurrection. After three days, Jesus rose from the dead and gave us hope for a new life.

What you need:

- Bible verse Luke 24:5-6 (NIV)
- tempera paint or acrylic paint
- paintbrush
- 1 sheet of light-colored construction paper
- paper towel or baby wipe



What to do:

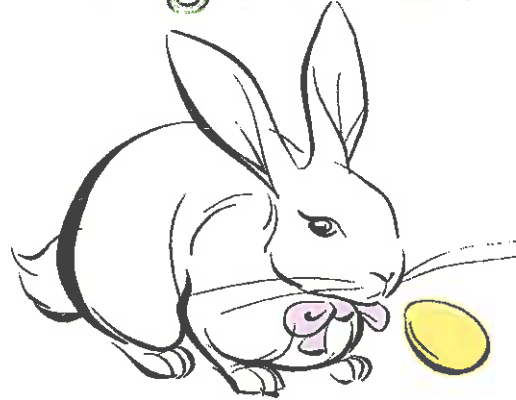
1. Draw a picture of a butterfly's body. Make it wide enough to write this verse inside the body:

"Why do you look for the living among the dead? He is not here; he has risen!"
Luke 24:5-6 (NIV)

2. Use the paintbrush to paint the palm of your hand.
3. Make a butterfly wing with your handprint by pressing your hand down next to the butterfly body.
4. Clean your hand with the paper towel or baby wipe.
5. Repeat steps 2-4 with the other hand.
6. Let the butterfly remind you of the sacrifice Jesus made for us and of the beauty of his Resurrection.

ANSWER: HANDS, NAILED, RIGHT, HAND, LEFT, FATHER, HANDS, HANDS, CARRIED, THOMAS, HANDS, HANDS, PRAYER.

Hop on in for a Easter Morning Potluck Breakfast



April 16, 2017

9am

**Please have food to church by 8:45 so we can pray & eat before the
Sunday School Easter celebration begins!**

**BRING A MAIN DISH SUCH AS EGG CASSEROLE, QUICHE,
SANDWICHES, ETC. ANYTHING ELSE OPTIONAL.**

Drinks, fruit and veggies provided.

POC: Lavonne Harrell 540-903-5664 or phoenixbird08@verizon.net





DCMARVA LWML SPRING RALLY

Saturday, April 29, 2017, 9-1:30

Mount Olivet Lutheran Church
1308 Vermont Ave NW, Washington, DC 20005-3607

Donation 10.00: includes continental breakfast and lunch

Guest Speaker: Pastor Tim McNutt and Amy who will provide a presentation of their mission trip to Africa

Ingathering Info: ("Blessing Bag" Toiletry Drive for N Street Village which provides housing for homeless women)

Travel size toothpaste	Full size toothpaste
Toothbrushes	Toothbrush cases
Travel size bar soap	Travel size shower gel/body wash
Soap cases	Blush
Eye shadow	Mascara
Lipstick	

Closing worship/Communion: Installation of incoming officers and blessing of ingathering gifts.

RSVP to Dorrie Aldrich, email dorrie.aldrich@gmail.com by April 15 with count from your church.

Serve the Lord With Gladness





Lent is God's Welcome Mat

**By Rev. Bruce Strade, Former
Executive Director, Northwest
Parish Nurse Ministries, Portland,
Oregon; Wheat Ridge Ministries
Board of Directors**

When I was in the process of purchasing my current home, I gave the seller an ultimatum: "That 6-foot fence in front of the house has got to go!" He was somewhat surprised at this request, since he felt that feature was one of the attractions of



the property. I added: "I refuse to live in a fortress and have no desire to barricade myself from my neighbors." The fence came down. The welcome mat came out.

The truth of the matter is that it is much easier to put up a barrier than to allow ourselves to be open and vulnerable. We play it safe when we distance ourselves from others. We do this in a variety of subtle ways that include: defending, ignoring, dismissing, appeasing, pleasing, tolerating, etc. Then there are those less than subtle ways we use, such as: judging, blaming, victimizing, exploiting, etc. Both approaches are invisible fences that prevent relationships from being fully authentic. They keep us from getting to know others and keep others from getting to know us. We stay comfortable, firm in our convictions, partially isolated and incomplete without realizing it.

Lent is all about God putting out the welcome mat and removing the obstacles that stand in the way of our relationship. This comes across most clearly in Jesus' stealth encounter with Nicodemus. After sharing the infamous [John 3:16](#), He states, "For God sent the Son into the world, not to condemn the world, but that the world might be saved through Him." Another way of saying this is: God did not come to build a fence, but to welcome the world into His kingdom. Out of His love for us, God removes the barriers. He allows Himself to be vulnerable. Meets us on our level. Risks His life for us.

Consider Lent an opportunity to tear down fences, remove the barriers that we put up between ourselves and others and embrace our shared humanity. Because we are loved, we are in a position to love others without reservations. That means caring about the poor, the marginalized, the hungry, the victimized, the stranger, all who are our neighbor. Together we are part of a whole. The world is everybody. So anything we do to ostracize or discriminate against is contrary to God's intent. Pope Francis suggests giving up indifference for Lent. Risky, but worth it, since we find wholeness in our

Peace Lutheran

Apr 2017 (Eastern Time)

Sun	Mon	Tue	Wed	Thu	Fri	Sat
26 4th Sunday in Lent 8:30am - Contempor 9:45am - Sunday 11am - Traditional	27	28 6pm - Adult Bible 7pm - Adult Choir	29 7pm - Junior Youth	30 9:30am - Adult Bible 7pm - Lenten 7:45pm - Worship	31	1
2 5th Sunday in Lent Preschool 10am - Contemporar	3	4 6pm - Adult Bible 7pm - A&Fin. Mtg. 7pm - Adult Choir	5 7pm - Junior Youth	6 9:30am - Adult Bible 7pm - Lenten 7:45pm - Council	7	8
9 Sunday of the 8:30am - Contempor 9:45am - Sunday 11am - Traditional	10	11 Passover 6pm - Adult Bible 7pm - Adult Choir	12 7pm - Pack 38 Mtg.	13 7pm - Maundy	14 7pm - Tenebrae/Goo	15
16 Easter 6:15am - Sunrise 9am - Breakfast 9:45am - Sunday 11am - Festival	17 Newsletter Deadline	18 6pm - Adult Bible 7pm - Adult Choir	19 7pm - Pack 38 Mtg.	20 9:30am - Adult Bible	21	22
23 National Volunteer Week	24	25 6pm - Adult Bible 7pm - Adult Choir	26	27	28	29
30 LCEF Sunday 8:30am - Contempor 9:45am - Sunday 11am - Traditional	1 8:30am - Breakfast 8:30am - Contempor 9:45am - Sunday 11am - Traditional 3pm - Lunch Bunch	2 6pm - Adult Bible 7pm - Adult Choir	3 7pm - Junior Youth	4 9:30am - Adult Bible 7pm - Worship Mtg.	5 National Day of 9:30am - Adult Bible 7pm - Council Mtg.	6 LWML Rally